



LIVING PRODUCT CHALLENGE™

The Living Product Challenge Certification standard defines the most advanced criteria for the creation of products. In essence, this standard proposes to make product design and production an opportunity to positively impact human and ecological communities worldwide.

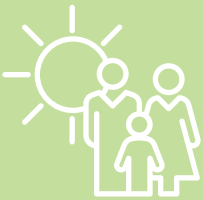
Living Products are defined as products that meet the following standards:



Healthy and free of toxins



Socially responsible and respects the rights of workers



Net positive and benefits both people and the environment

Our goal for achieving this certification is not only to contribute to a variety of green building standards, but to continue to drive change among fellow manufacturers by demonstrating the value of sustainability and environmentally-conscious products and practices.

Living Product LABEL

Superior Essex
Category 6+ LSHF Cable



Manufacturing Location:
Hoisington, Kansas, US

2/2	Place
0/1	Water
0/1	Energy
0/2	Health
4/7	Materials
3/4	Equity
2/3	Beauty

Life Expectancy:
30 Years

End of Life Options:
Salvageable/Reusable in its Entirety, Recyclable (95%)

Recycled Content:
00%

Bio-Based Material:
00%

Functional Unit:
100 feet of cable

Imperative Certified

Petals Met: Place

11/20

Carbon Impact

- Raw Materials
- Manufacturing
- Marketing & End of Life
- Use



7.892 Kg CO₂ Eq

Water Impact

- Raw Materials
- Manufacturing
- Marketing & End of Life
- Use



0.263 m³

Energy Impact

- Raw Materials
- Manufacturing
- Marketing & End of Life
- Use



160.5 MJ Eq

Waste Impact

- Diverted



100% Diversion Rate

Declare.

Ingredients: Copper, Ethylene/hexene-1 copolymer, 2',3-Bis[[3-[3,5-di-tert-butyl-4-hydroxyphenyl]propionyl]propionohydrazide, Tetrakis(methylene(3,5-di-t-butyl-4-hydroxyhydrocinamate)) methane, Polyethylene, Limestone, Titanium Dioxide, C.I. Pigment Blue 15, Ferric Oxide, 1H-Indol-1-one, 3,3'-(1,4-phenylenedilimino) bis[4,5,6,7-tetrachloro-, Aluminum Powder, Phthalocyanine Green, 2,2'-((3,3'-Dichloro(1,1'-Biphenyl)-4,4'-Diy)Bis(Azo))Bis(N-Methylphenyl)-3-Oxobutylamide), 2-Naphthalenecarboxylic Acid, 4-((5-Chloro-4-Methyl-2-Sulfophenyl)azo)-3-Hydroxy-, Barium Salt (1:1) (9CI), Alumina Trihydrate, Ethylene Acetate Polymer (EVA), White Mineral Oil, Carbon Black, Proprietary Ingredients (.4-21%)*

*LPC Temp Exception I07-E3 Innovative Material Inventory

Declaration Status: LBC Compliant

SPX-LP001

EXP. 09/12/2020

MANUFACTURER RESPONSIBLE FOR LABEL ACCURACY
INTERNATIONAL LIVING FUTURE INSTITUTE™ living-future.org/lpc



The First and Only **RED LIST FREE** Communications Cable

In keeping with our commitments to environmental responsibility, we devised a new cable product that increases occupant well-being by eliminating red list ingredients, while also delivering the performance and reliability our customers have come to know and expect from our products: the **Category 6+ Low Smoke Halogen Free (LSHF) copper cable**.

- Used to transmit 1 Gigabit Ethernet and Power-over-Ethernet throughout the built environment
- Supports In-building communications, data centers, security and access controls, and the powering and controlling of intelligent devices
- UL CMR listing allows for riser installations
- First and only cable of its type to be produced in a certified Zero Waste to Landfill facility
- Offers Environmental Product Declarations and Health Product Declarations

Changing the Way **WE CONNECT** the **WORLD**

With products that are produced and deployed around the globe, Superior Essex is committed to understanding how those products interact with human health and the environment, and ensuring that those interactions are positive. We remain dedicated to these efforts by recognizing the value sustainability brings to the customers, industries and communities we serve because we operate with an understanding that the products which interconnect the world must also respect it.

CABLING COUNTS for Your Green Building Project

A Living Product Certification allows our Category 6+ LSHF cable to contribute toward green building standards including the Living Building Challenge and WELL Building Standard.

- **Living Building Challenge:** LPC certified products count double toward the requirement for one Declare label per 500 square meters of gross building area (i.e. 1 LPC product counts as 2 Declare labels)
- **WELL Building Standard:** LPC certified products contribute toward features 26 and 97 under the WELL Building standards

Superior Essex is the only cable manufacturer to contribute to LBC building projects, and one of very few products to achieve this rigorous and industry-leading certification.